

BMDUSA.COM/VENTILATION

BMD VENTILATION CATALOG

VENTILATION PRODUCTS CATALOG

EAVE / FOUNDATION / SOFFIT
GABLE / ROOF / SIDING / RIDGE

VULCAN FIRE RESISTANT VENTS

LOMANCO VENTS

FAMCO VENTS

COR-A-VENT VENTS

MIDGET LOUVERS

ART'S VENTS

PARKINSON'S WOOD VENTS

GRATING PACIFIC SOFFIT SCREEN

IN-VENT VENTS

STOCKTON PRODUCTS METAL VENTS

NORWESCO VENTS

BMD

Building Material Distributors, Inc.

An Employee Owned Company

BMD STORY

BMD's humble beginnings started in 1943 as a small family-owned and operated wholesale business in Stockton, CA. As distribution grew, the business expanded and evolved. Today, Building Material Distributors, Inc. (BMD) is a national wholesale distributor and manufacturer of specialty building materials. BMD and its subsidiary companies supply premium products to independent lumberyards, building material dealers, window and door specialty retailers, hardware retailers and home centers.

For over 77 years, BMD has driven value, focused on specialty products, and forged quality partnerships. The partnerships mean more than just selling and delivering products, it means helping customers become successful through a highly trained sales force that delivers expertise and quality service.

BMD's family of brands include offerings in collated and bulk nails, brads and staples, threaded fasteners, light-gauge agricultural wire, and custom Carriage House Doors available across the country. BMD also distributes key categories like weatherization, vents, lumber, fasteners, siding, and many more. BMD is headquartered on a company-owned 22-acre site in Galt, CA.

BMD is 100% employee-owned and has earned various awards and been recognized by the ESOP community both regionally and nationally.



TABLE OF CONTENTS

Vulcan	
Fire Resistant Vents.....	pg.2
Lomanco Vents	pg.6
Famco Vents.....	pg.7
Cor-A-Vent Vents.....	pg.8
Midget Louvers	pg.9
Art's Vents	pg.10
Parkinson's	
Wood Vents	pg.13
Grating Pacific	
Soffit Screen.....	pg.14
In-Vent Vents	pg.14
Stockton Products	
Metal Vents	pg.15
NorWesCo Vents	pg.15

VULCAN VENT

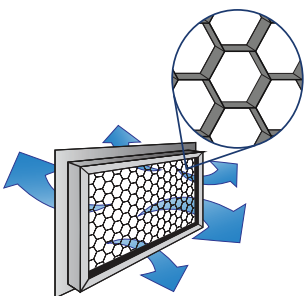
As development extends further into natural lands, the risk of exposure to wildfire increases. These areas are called the Wildland-Urban Interface (WUI) and are defined as areas where homes are built near or among lands prone to wildland fire.

It's estimated that 90% of the homes destroyed during wildfires are due to wind-blown embers. Embers shower into attic vents and eave spaces of neighboring houses, igniting them from the inside out! This can happen long before flames even come close!

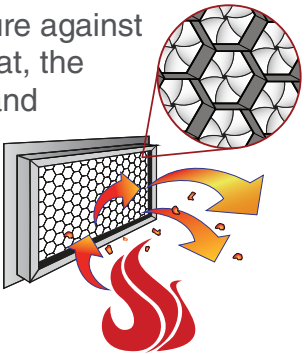
The Vulcan Vent is a **FIRST LINE OF DEFENSE** against ember attack, heat and exterior flame. Vulcan Vents will keep dangerous embers from entering the ventilation areas of your home even when the fire is still far away.

Vulcan Vents are self-closing when exposed to extreme heat and flames, preventing fire, as well as ember intrusion. The secret is in their patented design: a unique expanded hexagon core, coated with an intumescent coating from Firefree Coatings Inc.

Vulcan Vents use a smaller mesh size and have an **ACTIVE** measure against flames. Once exposed to heat, the specialized coating will expand rapidly, self-closing the vent completely and begin actively protecting homes from the dangers of flames and **EMBER INTRUSION**.



Vulcan Vents have superior air flow! Their 1/4" hex core allows for a high ratio of Net Free Vent Area (NFVA). The honeycomb core is made of 2 mil aluminum. It's lightweight, strong and works with many vent styles.



EAVE VENTS			
Item Code	Description	Qty/Box	NFVA
VER2	2" Round Louvered Face Fire Vent	25	1
VER2M	2" Round Mesh Face Fire Vent	25	2
VER3	3" Round Louvered Face Fire Vent	25	2
VER4	4" Round Louvered Face Fire Vent	25	4
VE3514	3.5" X 14" Eave Vent	10	24
VE3522	3.5" X 22" Eave Vent	10	41
VE5514	5.5" X 14" Eave Vent	10	44
VE5522	5.5" X 22" Eave Vent	10	75



FOUNDATION / SOFFIT VENTS			
Item Code	Description	Qty/Box	NFVA
VFS414FB*	4" X 14" Foam Back Flange Recessed 1-1/2"	10	24
VFS414FF*	4" X 14" Flange Front	10	24
VFS414S*	4" X 14" Flange Recessed 3/4" Stucco	10	24
VFS614FB*	6" X 14" Foam Back Flange Recessed 1-1/2"	10	41
VFS614FC*	6" X 14" Fiber Cement Flange Recessed 3/8"	10	41
VFS614FF*	6" X 14" Flange Front	10	41
VFS614S*	6" X 14" Set Back 3/4" Stucco	10	41
VFS814FB*	8" X 14" Foam Back Flange Recessed 1-1/2"	10	62
VFS814FF*	8" X 14" Flange Front	10	62
VFS814S*	8" X 14" Set Back 3/4" Stucco	10	62



- PROTECTION YOU CAN TRUST!**
- ✓ California Buiding Code (CBC) Chapter 7A Compliant
 - ✓ Wildland Urban Interface (WUI) Compliant
 - ✓ Western Fire Center Inc. (WFCI) 1-Hour Fire Rated Assembly
 - ✓ Meets ASTM E2886/E2886M Standards
 - ✓ California State Fire Marshal (CSFM) Building Material Listed (BML)

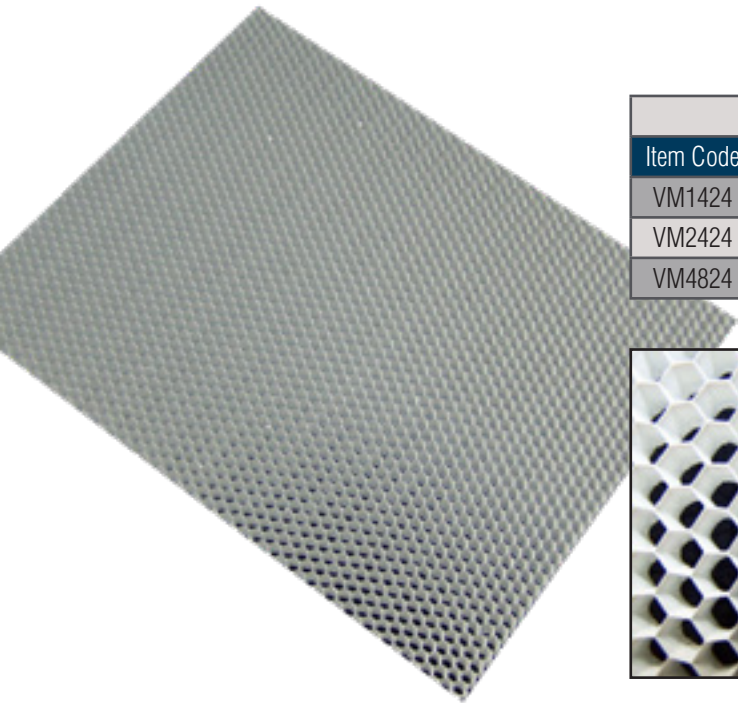
Some foundation and soffit vents are cross-categorized because of cross-application capability of certain models. Cross-application vents are indicated by an * symbol.

Suffix index:
 FF = Wood
 S = Stucco
 SMC = Mil Core
 FB = Foam Back
 FC = Fiber Cement

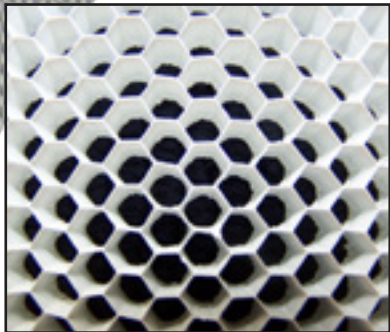


GABLE VENTS			
Item Code	Description	Qty/Box	NFVA
VG148FB	14" X 8" Foam Back Flange Recessed 1-1/2"	5	29
VG148FF	14" X 8" Flange Front	5	29
VG148S	14" X 8" Flange Set Back 3/4" Stucco	5	29
VG1412FB	14" X 12" Foam Back Flange Recessed 1-1/2"	5	58
VG1412FF	14" X 12" Flange Front	5	58
VG1412S	14" X 12" Flange Set Back 3/4" Stucco	5	58
VG1418FB	14" X 18" Foam Back Flange Recessed 1-1/2"	5	86
VG1418FF	14" X 18" Flange Front	5	86
VG1418S	14" X 18" Flange Set Back 3/4" Stucco	5	86
VG1424FB	14" X 24" Foam Back Flange Recessed 1-1/2"	5	115
VG1424FF	14" X 24" Flange Front	5	115
VG1424S	14" X 24" Flange Set Back 3/4" Stucco	5	115

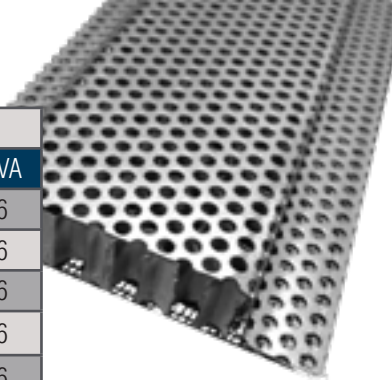
Suffix index: FF = Wood, S = Stucco, FB = Foam Back, FC = Fiber Cement



VULCAN MATRIX ONLY			
Item Code	Description	Qty/Box	NFVA
VM1424	14" x 24" Vulcan Honeycomb/Mesh Matrix Only	10	Dependent
VM2424	24" x 24" Vulcan Honeycomb/Mesh Matrix Only	10	Dependent
VM4824	48" x 24" Vulcan Honeycomb/Mesh Matrix Only	10	Dependent



Matrix only: The honeycomb / mesh matrix with active intumescent fire control. Only to fit into current vents. Common use: Interior Gable Vent Retro-fit Kit



CONTINUOUS SOFFIT VENTS			
Item Code	Description	Qty/Box	NFVA
VSC2120	2" X 120" Nailing Flange On Both Sides	10	96
VSC3120	3" X 120" Nailing Flange On Both Sides	10	96
VSC2120SL	2" X 120" Single Nailing Flange	10	96
VSC2120SMC34	2" X 120" Stucco 3/4"	8	96
VSC2120SMC78	2" X 120" Stucco 7/8"	8	96
VSC2120SMC15	2" X 120" Stucco 1-1/2"	8	96
VE3522FF	3.5" X 22" Flange Front	10	41
VE5522FF	5.5" X 22" Flange Front	10	75
VE3522FC	3.5" X 22" Fiber Cement Flange Set Back 3/8"	10	41
VE5522FC	5.5" X 22" Fiber Cement Flange Set Back 3/8"	10	75
VE3522S	3.5" X 22" Stucco Flange Set Back 3/4"	10	41
VE5522S	5.5" X 22" Stucco Flange Set Back 3/4"	10	75



DORMER VENTS & TRIM KITS			
Item Code	Description	Qty/Box	NFVA
VDLR419	4" X 19" Low Profile Vent "Eyebrow"	5	52
VDHR1224	12" X 24" Half Round Dormer Vent	5	90
VDHR1224R	12" X 24" Retrofit Half Round Dormer Vent With Soft Zinc Hood	5	90
VDHR918	9" X 18" Half Round Dormer Vent	5	51
VDHR918R	9" X 18" Retrofit Half Round Dormer Vent With Soft Zinc Hood	5	51
GUTTER GUARD			
DF5CG	5' Defender Gutter Guard - CT Only	25	N/A
SUB BASE FLASHINGS FOR UNIVERSAL DORMER VENTS			
VSB1212	12" X 12" With 3" Flanges On All 4 Sides	10	105
VSB8585	8.5" X 8.5" With 3" Flanges On All 4 Sides	10	54



NFVA — Net Free Ventilation Area
Measured in square inches (sq. in.)

LOMANCO VENTS

Lomanco has been producing quality ventilation products since 1946 — it's what they know and do the best.

Lomanco never compromises on quality. They know the importance of manufacturing ventilation products that have the proper emphasis on net free area, weather protection, and longevity. Lomanco's innovative manufacturing facility, engineering lab, and testing facility are used to produce high quality products with the proven performance you've come to depend on.

Customers can feel secure knowing a great product, backed by the history and integrity of Lomanco.

2" X 8' SOFFIT VENTS			
Item Code	Description	Qty/Box	NFVA
105B	8' Brown Soffit	36	72
105M	8' Mill Soffit	36	72
105W	8' White Soffit	36	72



4" X 16" CORNICE VENTS			
Item Code	Description	Qty/Box	NFVA
C416B	Brown Cornice	12	25
C416M	Mill Finish Cornice	12	25
C416W	White Cornice	12	25



6" X 16" CORNICE VENTS			
Item Code	Description	Qty/Box	NFVA
C616B	Brown Cornice	12	37
C616M	Mill Finish Cornice	12	37
C616W	White Cornice	12	37



8" X 16" CORNICE VENTS			
Item Code	Description	Qty/Box	NFVA
C816B	Brown Cornice	12	65
C816M	Mill Finish Cornice	12	65
C816W	White Cornice	12	65



FAMCO VENTS

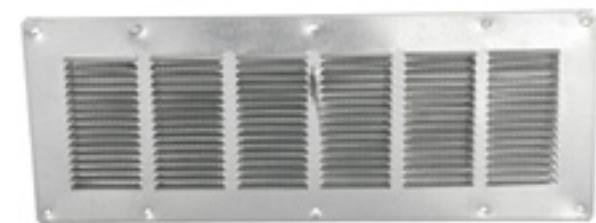
Established in 1989, Fresh Air Manufacturing (FAMCO) headquartered in Meridian Idaho is one of the Pacific Northwest's leading manufacturers of Roof Flashings, Ventilation Products, HVAC Accessories and Plastic Air Ventilation Products.

Customers trust FAMCO to deliver unparalleled quality and lead times in the HVAC market. They pursue a vibrant future, driven by empowered individuals working as a team, committed each day to continuous improvement.

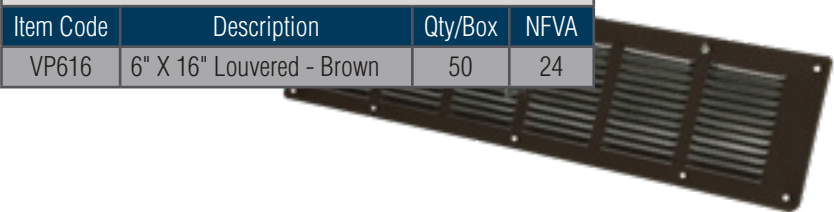
GALVANIZED FOUNDATION VENTS			
Item Code	Description	Qty/Box	NFVA
V616	6" X 16" Louvered	50	24
V816	8" X 16" Louvered	50	36



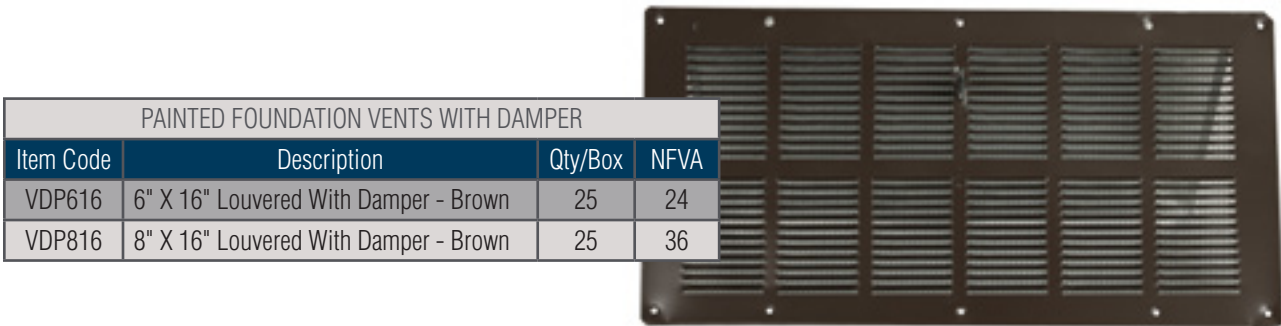
GALVANIZED FOUNDATION VENTS WITH DAMPER			
Item Code	Description	Qty/Box	NFVA
VD616	6" X 16" Louvered With Damper	50	24
VD816	8" X 16" Louvered With Damper	50	36



PAINTED FOUNDATION VENTS			
Item Code	Description	Qty/Box	NFVA
VP616	6" X 16" Louvered - Brown	50	24



PAINTED FOUNDATION VENTS WITH DAMPER			
Item Code	Description	Qty/Box	NFVA
VDP616	6" X 16" Louvered With Damper - Brown	25	24
VDP816	8" X 16" Louvered With Damper - Brown	25	36



COR-A-VENT

COR-A-VENT VENTS

For over 35 years, Cor-A-Vent has manufactured roof ventilation products necessary to provide homes with the breath of fresh air needed to protect it inside and out, as recommended by the National Association of Home Builders. Since the V-400, the original shingle-over ridge vent, was officially introduced in 1976, Cor-A-Vent has been at the forefront of the attic ventilation market.

With roof ventilation systems including ridge vents, hip vents, their very own Roof-2-Wall Vents, the IN-Vent, the Purlin Vent for metal roofs and the Revolution Rolled Ridge Vent they've got your roof and attic ventilation problems solved. And don't forget about their rain screen siding vents, including the Sturdi-Strip and new Sturdi-Batten. Cor-A-Vent has been a trusted name in home ventilation since 1976.

RIDGE VENTS			
Item Code	Description	Qty/Box	NFVA
V300CS	5/8" X 8-1/2" X 48" - Ridge Vent	12	13.5
V600CS	1" X 8-1/2" X 48" - Ridge Vent	12	20
V600	1" X 11" X 48" - Ridge Vent	12	20



SOFFIT VENTS			
Item Code	Description	Qty/Box	NFVA
S400	1" X 1-1/2" X 48" - Soffit Vent - White	24	10
S400B	1" X 1-1/2" X 48" - Soffit Vent - Black	24	10



SIDING VENTS AND STURDI STRIPS			
Item Code	Description	Qty/Box	NFVA
SV3	7/16" X 3" X 4' Siding Vent	24	5
SV5	3/4" X 3" X 4' Siding Vent	15	8.5
SS112	1-1/2" X 3/8" X 4' Sturdi Strip	112	N/A
STURDIBATT	48" X 7/16" Batten Strip	48	N/A



STARTER STRIPS			
Item Code	Description	Qty/Box	NFVA
ST30	1-1/4" X 5/16" X 4' Starter Strip	30	N/A



MIDGET LOUVER

MIDGET LOUVERS

Midget Louver is the inventor and original manufacturer of aluminum air vents and louvers. Midget Louver has been providing solutions to ventilation problems for both the commercial and residential market since 1948.

Located in Milford Connecticut, Midget Louver is a family-owned company that prides itself on delivering high quality products. They have sold their air ventilation products to thousands of customer's worldwide. All Midget Louvers are proudly made in the USA.

ALUMINUM MIDGET LOUVERS			
Item Code	Description	Qty/Box	NFVA
RLS1	1" Midget Louver RLS	12	0.23
RLS112	1-1/2" Midget Louver RLS	12	0.48
RLS2	2" Midget Louver RLS	12	0.90
RLS212	2-1/2" Midget Louver RLS	12	1.35
RLS3	3" Midget Louver RLS	12	2
RLS4	4" Midget Louver RLS	12	3.45



ALUMINUM MIDGET LOUVERS WITH SCREEN			
Item Code	Description	Qty/Box	NFVA
REG1	1" Midget Louver With Screen	12	0.20
REG112	1 1/2" Midget Louver With Screen	12	0.43
REG2	2" Midget Louver With Screen	12	0.66
REG212	2-1/2" Midget Louver With Screen	12	1.31
REG3	3" Midget Louver With Screen	12	1.77
REG4	4" Midget Louver With Screen	12	2.85
REG6	6" Midget Louver With Screen	12	5.20

WHITE MIDGET LOUVERS			
Item Code	Description	Qty/Box	NFVA
RLS2W	2" Midget Louver RLS	12	0.90
RLS3W	3" Midget Louver RLS	12	2
RLS4W	4" Midget Louver RLS	12	3.45



LD SERIES MIDGET LOUVERS			
Item Code	Description	Qty/Box	NFVA
LD2M	2" Midget Louver Mill Finish	12	1.70



ART'S VENTS

ART's is dedicated to bringing customers quality products with unparalleled service. These two simple goals enable them to do business the right way, keeping the customer, in mind first and foremost.

A quality product starts by getting quality material. At Art's they do everything possible to assure that their products are fabricated with materials that meet their rigid standards. Each load of material is carefully inspected so that their products' performance always meets their customers' expectations.

Art's products have been developed through thirty years of experience. From their UL-approved roof assembly to their premiere flashing, they have always put quality and dependability first.

ROOF VENTILATORS			
Item Code	Description	Qty/Box	NFVA
ED194	19" X 4" Dormer Eyebrow 1/4" Mesh	6	50
20	All Pitch Roof Dormer 1/4" Mesh	6	-
2000	Plyco 2000 Eyebrow Vent 1/4" Mesh	8	-
2645	Large Dormer 1/4" Mesh	6	-
RV38	Roof Ventilator 1/4" Mesh	6	-
V20A	19" X 4" Dormer Eyebrow 1/8" Mesh	6	50



EAVE VENTS - 1/8" MESH			
Item Code	Description	Qty/Box	NFVA
258	22" X 3-1/2" Eave Vent	50	42
2581	22" X 5-1/2" Eave Vent	50	76



EAVE VENTS - 1/4" MESH			
Item Code	Description	Qty/Box	NFVA
244	14" X 3-1/2" Eave Vent	50	29
2441	14" X 5-1/2" Eave Vent	50	51
V254	22" X 3-1/2" Eave Vent (Old Style)	50	46
254	22" X 3-1/2" Eave Vent (Expanded)	50	65
254S	22" X 3-1/2" Eave Vent W/Stucco Flange	50	46
2514E	22" X 5-1/2" Eave Vent Expanded Metal	50	102
2541	22" X 5-1/2" Eave Vent	50	83
2741	22" X 7-1/2" Eave Vent	50	120

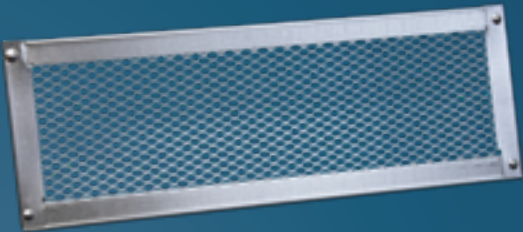


FOUNDATION VENTS			
Item Code	Description	Qty/Box	NFVA
23	14" X 4" Foundation Vent 1/4" Mesh	75	42
23F	14" X 4" Flat Foundation Vent 1/4" Mesh	75	42
26	14" X 8" Foundation Vent 1/4" Mesh	50	89
26F	14" X 8" Flat Foundation Vent 1/4" Mesh	50	89
27	14" X 6" Foundation Vent 1/4" Mesh	50	62
27F	14" X 6" Flat Foundation Vent 1/4" Mesh	50	62
27FOAM	14" X 6" X 1-1/2" Foundation Vent 1/4" Mesh	50	62
278	14" X 6" Foundation Vent 1/8" Mesh	50	57
278F	14" X 6" Flat Foundation Vent 1/8" Mesh	50	57
V278FOAM	14" X 6" X 1-1/2" Foundation Vent 1/8" Mesh	50	57

GABLE VENTS - 2" THICK 1/8" MESH			
Item Code	Description	Qty/Box	NFVA
618	14" X 12" Gable Louver	12	76
628	14" X 18" Gable Louver	12	114
638	14" X 24" Gable Louver	12	151
V61FOAM	14" X 12" Gable Louver	10	76
V62FOAM	14" X 18" Gable Louver	10	114
V63FOAM	14" X 24" Gable Louver	10	151

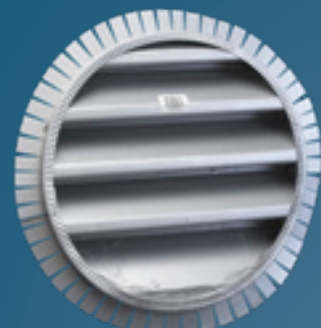
GABLE VENTS - 2" THICK 1/4" MESH			
Item Code	Description	Qty/Box	NFVA
604	14" X 8" Gable Louver	12	43
614	14" X 12" Gable Louver	12	84
624	14" X 18" Gable Louver	12	125
634	14" X 24" Gable Louver	12	166
624FB	14" X 18" Gable Louver With Flange On Back	12	125
634FB	14" X 24" Gable Louver With Flange On Back	12	166

GABLE VENTS - 1-1/2" THICK 1/4" MESH			
Item Code	Description	Qty/Box	NFVA
V604	14" X 8" Gable Louver	10	43
V614	14" X 12" Gable Louver	10	84
V624	14" X 18" Gable Louver	10	125
V634	14" X 24" Gable Louver	10	166
614FOAM	14" X 12" Gable Louver	10	84
624FOAM	14" X 18" Gable Louver	10	125
634FOAM	14" X 24" Gable Louver	10	166

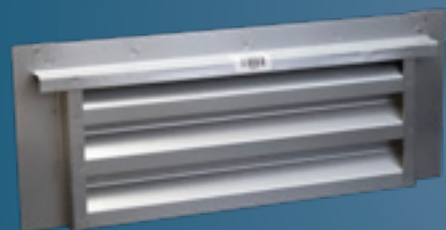




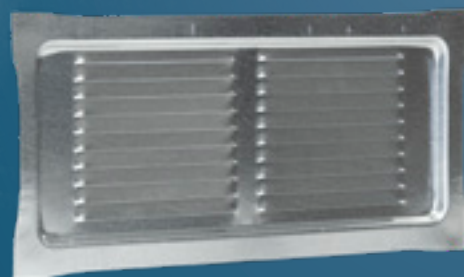
ARCH AND ROUND TOP GABLE VENTS - 2" THICK 1/4" MESH			
Item Code	Description	Qty/Box	NFVA
RT1424	14" X 24" Gable Vent	6	-



ROUND GABLE VENTS - 2" THICK 1/4" MESH			
Item Code	Description	Qty/Box	NFVA
R14	14" Gable Vent	6	87
R18	18" Gable Vent	6	144
R24	24" Gable Vent	6	280



STACKABLE LOUVER			
Item Code	Description	Qty/Box	NFVA
3500	Plyco 3506ST 14" X 6" Stackable Louver	50	-



STAMPED LOUVER VENTS			
Item Code	Description	Qty/Box	NFVA
28	14" X 6" Louver Vent	50	20
284	14" X 6" Louver Vent 1/4" Mesh	25	18
288	14" X 6" Louver Vent 1/8" Mesh	25	16



TUB ACCESS AND CRAWL HOLE			
Item Code	Description	Qty/Box	NFVA
1824	18" X 24" Crawl Hole Vent 1/4" Mesh	12	305
18248M	18" X 24" Crawl Hole Vent 1/8" Mesh	12	200

PARKINSON'S VENTS

OCTAGON GABLE VENTS			
Item Code	Description	Qty/Box	NFVA
CWVO18R	18" Cedar	1	N/A
CWVO24R	24" Cedar	1	N/A
PWVO18	18" Primed	1	N/A
PWVO24	24" Primed	1	N/A
RWVO18	18" Redwood	1	N/A
RWVO24	24" Redwood	1	N/A

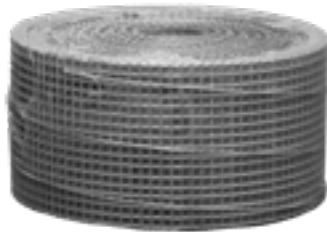
RECTANGULAR GABLE VENTS			
Item Code	Description	Qty/Box	NFVA
CWVRE1612R	16" X 12" Cedar	5	N/A
CWVRE1618R	16" X 18" Cedar	5	N/A
CWVRE1624R	16" X 24" Cedar	5	N/A
PWVR1618	16" X 18" Primed	5	N/A
PWVR1624	16" X 24" Primed	5	N/A
RWVRE168	16" X 8" Redwood	5	N/A
RWVRE1612	16" X 12" Redwood	5	N/A
RWVRE1618	16" X 18" Redwood	5	N/A
RWVRE1624	16" X 24" Redwood	5	N/A

REDWOOD FOUNDATION VENTS			
Item Code	Description	Qty/Box	NFVA
RWVF164	16" X 4" Redwood	24	N/A
RWVF166	16" X 6" Redwood	24	N/A
RWVF168	16" X 8" Redwood	24	N/A

ROUND GABLE VENTS			
Item Code	Description	Qty/Box	NFVA
CWVC18R	18" Cedar	1	N/A
PWVC18	18" Primed	1	N/A
PWVC24	24" Primed	1	N/A
RWVC18	18" Redwood	1	N/A
RWVC24	24" Redwood	1	N/A

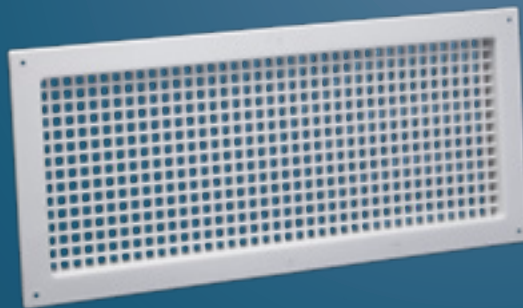
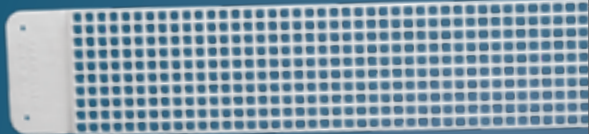


GRATING PACIFIC



GALVANIZED SOFFIT SCREEN			
Item Code	Description	Qty/Box	NFVA
41008M	SS184 4" X 100' - 1/8" Mesh Wide	6	N/A
61008M	SS186 6" X 100' - 1/8" Mesh Wide	6	N/A
41004M	SS144 4" X 100' - 1/4" Mesh Wide	4	N/A
61004M	SS146 6" X 100' - 1/4" Mesh Wide	4	N/A
81004M	SS148 8" X 100' - 1/4" Mesh Wide	4	N/A

IN-VENT VENTS



POLYPROPYLENE EAVE VENTS			
Item Code	Description	Qty/Box	NFVA
322W	3-1/2" X 22-1/2" White	50	39.375
322BR	3-1/2" X 22-1/2" Brown*	50	39.375
322GR	3-1/2" X 22-1/2" Gray* **	50	39.375
522W	5-1/2" X 22-1/2" White	50	59.0625
522BR	5-1/2" X 22-1/2" Brown* **	50	59.0625
522GR	5-1/2" X 22-1/2" Gray* **	50	59.0625

POLYPROPYLENE FOUNDATION VENTS			
Item Code	Description	Qty/Box	NFVA
616W	6" X 16" White	25	37.25
616BR	6" X 16" Brown*	25	37.25
616GR	6" X 16" Gray*	25	37.25

* Please allow 2-3 weeks for delivery for In-Vent items.
** Special order only.

STOCKTON PRODUCTS



SOFFIT VENTS			
Item Code	Description	Qty/Box	NFVA
SV1315	10' Soffit Vent - 1-1/2" PTP - 3/4" Ground - 1/4" Holes - #1315J	10	3.14
SV1325	10' Soffit Vent - 2-1/2" PTP - 3/4" Ground - 1/4" Holes - #1325J	10	7.85
SV1925B	10' X 1/2" X 2-1/4" Brown Plywood Soffit - 1/4" Holes - #1925B	10	7.85
SV1925W	10' X 1/2" X 2-1/4" White Plywood Soffit - 1/4" Holes - #1925B	10	7.85

*Stockton Products Soffit Vent NFVA are stated in square inches per foot of net length.

NORWESCO VENTS



FOUNDATION VENTS			
Item Code	Description	Qty/Box	NFVA
FV6GEC	Ember Control 6" Foundation Vent 1/8" Mesh	20	N/A
FV8GEC	Ember Control 8" Foundation Vent 1/8" Mesh	15	N/A

ROOF VENTS			
Item Code	Description	Qty/Box	NFVA
PRV50B	PRV-50 Roof Vent - Black	12	40
PRV50DB	PRV-50 Roof Vent - Dark Brown	12	40
PRV50G	PRV-50 Roof Vent - Grey	12	40

ROOF CAP VENTS			
Item Code	Description	Qty/Box	NFVA
RVS4B	RVS-4" Black Stem Vent	4	11.9
RVS4DB	RVS-4" Dark Brown Stem Vent	4	11.9
RVS6B	RVS-6" Black Stem Vent	4	15.73
RVS6DB	RVS-6" Dark Brown Stem Vent	4	15.73



CONTINUOUS SOFFIT VENTS			
Item Code	Description	Qty/Box	NFVA
SV8BR	8' Continuous Soffit Vent - Brown	75	53
SV8W	8' Continuous Soffit Vent - White	75	53

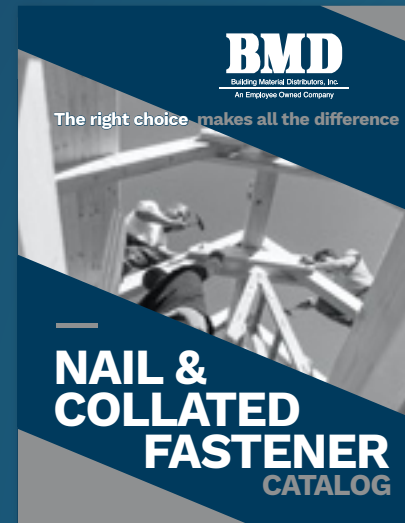


*NorWesCo are Eureka specific items.

NOTES

[illegible]

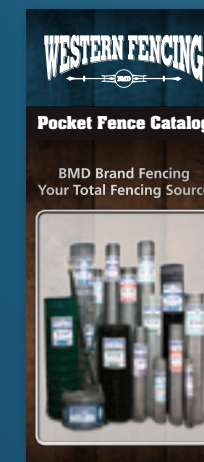
BMD BROCHURES



For all your nail and collated nail needs, ask your BMD representative for our Nail & Collated Fastener Catalog. We carry a wide assortment of loose and collated fasteners in a variety of lengths, shank thickness, head types, and point types that are geared towards specific applications to meet all your fastening requirements.



For all your threaded fastener needs, ask your BMD representative for our Threaded Fastener Catalog. We offer threaded fasteners in a variety of lengths, shank thickness, drive types, thread types and point types that are geared towards specific applications to help you accomplish your project quickly and effortlessly.



For all your fencing needs, ask your BMD representative for our Western Fencing Pocket Fence Catalog. We carry an assortment of fencing and agricultural products ranging from Barbed Wire to T-Posts, Welded Wire to Poultry Netting. This catalog will guide you to select the best products for your fencing and agricultural projects.

BMDUSA.COM/VENTILATION



BMD

Building Material Distributors, Inc.
An Employee Owned Company

225 ELM AVENUE
GALT, CA 95632

800.545.0365

YOUR LOCAL BMD
REPRESENTATIVE IS: